

LOGISTICS



# CORPORATE PROFILE

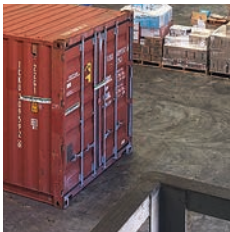
**Anitua Logistics**

Commercial in Confidence





## COMPANY DETAILS



*Anitua Logistics purchases, receives, packs, freights and manages everything right through to delivery to its customers.*

### Company Name

Anitua Logistics Pty Ltd

### Parent Company

Part of the Anitua Group of Companies

### Address

345 Thynne Road  
Morningside  
Queensland  
4170  
Australia

### Website Address

[www.anitua.com.au/logistics](http://www.anitua.com.au/logistics)

### Year Established

Anitua Logistics Services: 2013

Anitua Group: 1989



## ABOUT



*Anitua Logistics is located close to the Brisbane River, shipping companies, and major motorways.*



*Anitua Logistics can supply everything from large-scale equipment and plant through to everyday parts and consumables*

**Freight, big or small, between Australia, NZ and the Pacific Rim**

Anitua Logistics provides tailored procurement and supply chain logistics from the point of procurement to delivery to the customer. With headquarters in the Brisbane suburb of Morningside, we are located close to the Brisbane River, shipping companies, and major motorways.

### **The complete supply and logistics partner**

Working closely to understand the needs of your team and organisation, we can tailor solutions to suit day-to-day, long-term and project-based requirements.

With our complete supply-chain solutions we can manage everything right through to delivery to you – purchasing, receiving, packing, storage and freight.

### **Big on performance and detail**

You can rely on us for the supply of everything from the largest mining and manufacturing equipment through to the smallest parts and consumables.

Our logistics solutions include out-of-gauge and heavy-lift cargo across many industries including construction, mining, drilling, oil and gas, civil road works, hospitality and retail.

### **Sharpen your business focus**

Outsourcing supply and logistics can provide real benefits for organisations – assisting with streamlined operations, maximised efficiencies and a more responsive approach to market change.

We take the time to understand your requirements, developing a collaborative approach and building efficiencies into end-to-end processes.

From sourcing and procuring products, checking orders, coordinating purchases from multiple suppliers through to combining orders for optimisation – we provide logistics planning at all stages of the project cycle.



## PRODUCTS AND SERVICES



*Anitua Logistics provides tailored procurement and supply chain strategies from the point of procurement to delivery to the customer.*

Our specialist knowledge, expertise and flexible approach deliver better results for our customers, with services that include:

- Import and export air, sea and land freight
- Vessel and aircraft chartering
- Project cargo management
- Storage and transit distribution
- Customs brokerage
- Rail, road, air and sea services
- FCL / LCL containers and bulk cargo
- Complete logistics and distribution services
- Unpacking and storage
- Consignment tracking and tracing
- Perishables, liquid and valuable cargo
- Temperature controlled handling and storage

**Anitua Logistics recently transported two Hitachi Excavators with a combined weight of 310 tonnes from Brisbane to Lihir, PNG.**





## COMPETITIVE ADVANTAGE



*Anitua Logistics services businesses in diverse industries including mining, drilling, construction, civil road works, hospitality and retail.*

**Goods can be consolidated at Anitua Logistics' purpose built warehouse**

### **Building relationships around a single-point of contact**

We provide single-point accountability and a support team focused on operational excellence.

It's more than just convenience, it's confidence and certainty in knowing everything is in safe hands – from large-scale equipment and bulk cargo to everyday consumables and complete logistics solutions.

### **Regional freight services anytime, anywhere**

With the right people, facilities and experience, we can service any business wanting to get any kind of freight, no matter how big or small, between Australia, New Zealand, Singapore, the Pacific Rim and Papua New Guinea, or anywhere in between.

### **A personalised way of doing business**

What makes our approach to business unique is the way in which we work with organisations. Building a strong relationship based on respect, shared knowledge, smarter thinking and ongoing support – that is the Anitua Way.

It's a personalised way of doing business, one that builds our business around our clients to deliver their best imaginable solutions.



## BREADTH OF EXPERIENCE



*Single point accountability and personalised service focused on each of our customers.*

### International Experience / Project Experience

Australia, New Zealand, Singapore, the Pacific Rim and Papua New Guinea.

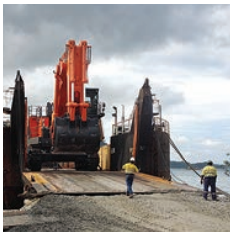
### Key Clients or Customers

Major clients include:

- Newcrest
- Anitua Mining Services
- Anitua Supermarket
- Anitua Hardware
- NCS
- Laba Alliance Group
- Hides Alliance Group
- Suai Ltd
- Axiom Mining Limited



## OTHER RELEVANT INFORMATION



*Anitua Logistics manages freight between Australia, NZ and the Pacific Rim, or anywhere in between.*

### **A perfect partner**

The Anitua Group's safety focus and cultural knowledge, combined with strengths of local experience, highly trained staff and strong management, makes the Anitua Group a perfect partner.

### **Financially stable**

Furthermore, the Anitua Group are financially stable, with excellent management systems and corporate governance controls. The World Bank recently reported that the Anitua Group has the right commercial model for ongoing sustainability and success.

In terms of management, all of our companies are run to board level, with proper accounting, board meetings, dividends and sustainability provisions.

### **One-stop-shop approach**

The Anitua Group can offer a one-stop-shop approach, with the ability to provide multiple services – from mining and drilling services, camp construction, operations, and accommodation solutions, to catering, janitorial, security services, hardware supply, retail operations, vehicle supply and more.



## ABOUT THE ANITUA GROUP



*The combined strengths of local experience, cultural knowledge, highly trained staff and strong management, makes Anitua a perfect partner for your organisation.*

Anitua works with its range of business partners and clients every day to not only break new ground in a literal sense, but to constantly push the envelope – looking for better ways of servicing our clients' needs.

The Anitua Group can offer packages of services to those looking at major projects – construction, camp management, security, mining services and more. We also ensure our smaller clients are well looked after in the field of their needs – be it retail, security or civil works.

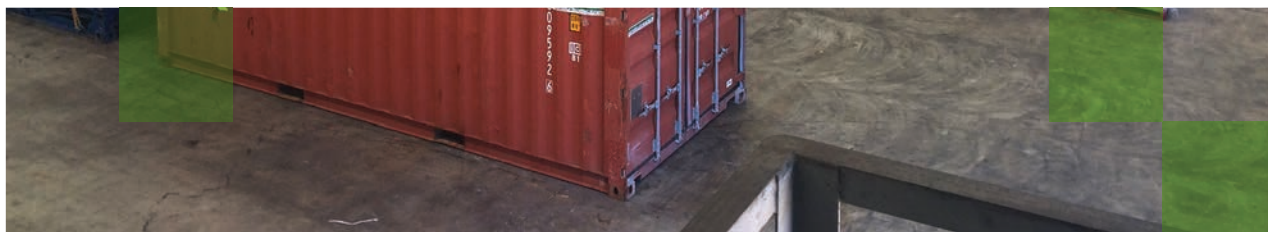
Socially responsible and progressive, the Anitua Group is a diverse range of specialised companies complementing and supporting each other to provide value to organisations across many industries.

### The Group's impressive portfolio of businesses includes:

- Anitua Corporate Services
- Anitua Mining Services
- Anitua Radial Drilling Services
- Anitua Constructions
- Anitua Protective Services
- Anitua Transport Services
- Anitua Logistics (PNG & Australia)
- Anitua Supermarket
- Anitua Hardware
- Anitua Motors
- Anitua Investments
- Anitua Properties
- Anitua Farms
- Lihir Auto Services
- Lihir Investments (Australia)
- NCS Holdings
- The Alliance Group (TAG)

**The Anitua group offers a breadth of services with the ability to provide complete end-to-end solutions**





## ABOUT THE ANITUA GROUP



*The ability to provide complete end-to-end solutions enables our customers to outsource many of their business and operational requirements, allowing them to minimise their capital investment and streamline their operations.*

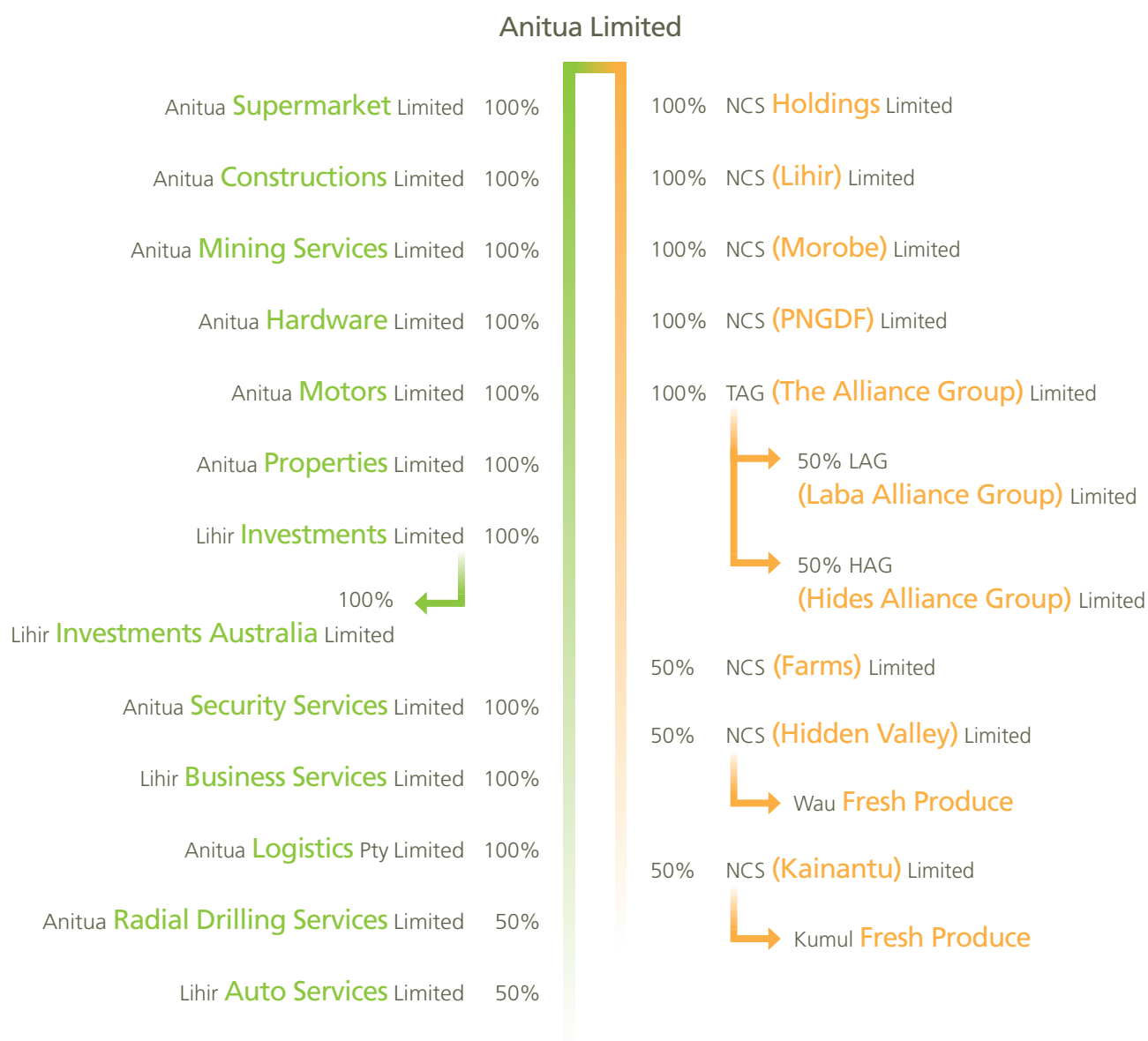
The Anitua Group offers a breadth of services with the ability to provide complete end-to-end solutions.

### The group's services include:

- Mine site support
- Mining and equipment
- Contract mining
- Quarrying services
- Road and civil construction
- Drilling
- Camp operation and management
- Construction and maintenance
- Catering and hospitality
- Hotels
- Farming
- Fresh produce
- Supermarket
- Hardware
- Security services
- Property management
- Automotive
- Transport
- Logistics
- Business development
- Small business services



## ORGANISATION STRUCTURE





7562.1214

## ANITUA LOGISTICS KEY CONTACTS

### **Tim Sampson**

Manager

Tel: (+61) 07 3399 9800 ext 1403

[tim.sampson@anitualogistics.com.au](mailto:tim.sampson@anitualogistics.com.au)

