

MINING, CIVIL & EQUIPMENT



CORPORATE PROFILE

Anitua Mining

Commercial in Confidence





COMPANY DETAILS



Anitua Mining Services has contracts in place for the movement of up to 20 million cubic metres of material.

Company Name

Anitua Mining Services Ltd

Parent Company

Part of the Anitua Group of Companies

Address

Lihir

Lot 816
Lower Londo Rd
Lihir Island
New Ireland Province
PNG

Port Moresby

Section 34
Lot 12 Croton Street
Hohola
Port Moresby NCD
Papua New Guinea

Postal Address

PO Box 108
Lihir Island
New Ireland Province
PNG

Website Address

www.anitua.com.pg/mining

Number of Employees

Anitua Mining Services: 250

Anitua Group: 3,000

Year Established

Anitua Mining Services: 1989

Anitua Group: 1989



ABOUT



The dedicated road sealing team is able to complete any large or small bitumen project.

Our specialist knowledge and skills makes a difference, with a breadth of construction and mining expertise

Outsourcing your mining fleet reduces the risk and complexity associated with mining equipment ownership and the employment and training of staff. Safety, training and innovative problem solving are critical to the success of our approach. We consider safety to be a way of life.

With Anitua Mining Services your mine can be fully operational from day one. In addition to mining services such as earthworks, quarrying and earth moving, we are able to supply you with road and civil construction services. We are a 'one stop shop' for all things mining – with the ability to provide complete end-to-end solutions.

A higher level of efficiency

Finding a business partner dedicated to achieving your company's performance goals is often the biggest challenge in selecting a mining or civil solution. When you choose Anitua Mining Services, you join a growing list of companies that are registering excellent results on their bottom line by taking their operations to a higher level of efficiency.

Specialist knowledge and skills makes a difference

The people we employ have the specialist knowledge and skills to work in a variety of environments, including those with rugged and mountainous terrain and high rainfall. They understand what is required to achieve results in these challenging environments.

When you need results, we are there to get the job done

We have 25+ years experience in some of the world's most technically challenging mining environments, and long-standing relationships with leading organisations. Our specialised equipment, mobile fleet and highly skilled team with a 'can do' attitude combine to make us the leader in our field. We deliver the benefits of improved productivity and profitability due to the smarter thinking that goes into our approach.



ABOUT



Coronus quarry operation provides material for road construction.

**A support team
that brings you
operational
efficiencies
from day one**

Our breadth of mining and civil expertise is spread across four separate business units, each with a focus on specific skills, equipment, products and services.

Contract Mining

With the ability to supply, manage and maintain large mining equipment, Anitua Mining Services have contracts in place for the movement of up to 20 million cubic metres of material.

We can source the appropriate fleet to meet your mining needs from small-scale alluvial operations to major mine development projects.

We can also provide the people, resources and expertise to undertake and complete material movement contracts.

Road and Civil Construction

Our roads projects have included town and rural road construction, upgrades and sealing. Our civil construction and earthworks projects include a diverse range of engineered foundations, build pads and pipeline earthworks.

Anitua Mining Services has a wide range of civil construction equipment available.

Mine Site Support and Mining Equipment

The mine site support group provides earthmoving equipment and dedicated supervisors and operators on an hourly or day hire basis. Fully equipped workshops provide trained and qualified mechanical support with the ability to service, repair and maintain the fleet. Projects such as crusher feed, drainage, batter trimming and clearing can also be undertaken.

Quarrying Services

Our quarries produce materials for mining and civil projects. We can support, operate and provide crushers for material sizing or provide suitable materials for construction projects.



PRODUCTS AND SERVICES



Dedicated road sealing teams provide complete services for large or small bitumen projects.

With safety as our number one priority, we are specialists in the field of Mining. Our specialist knowledge, expertise and flexible service will ensure the delivery of timely, cost-effective and quality results.

Our breadth of mining and civil construction expertise is spread across four separate business units, each with a focus on specific skills, equipment, products and services.

- Contract Mining
- Road and Civil Construction
- Mine Site Support and Mining Equipment
- Quarrying Services
- Crushing Services

Our standard resources available to mining and civil construction include:

- | | |
|-------------------------------------|--------------------------------|
| ■ Cat 988H wheel loader | ■ CAT 829 backhoes |
| ■ Hyundai HL780 wheel loaders | ■ Articulated water trucks |
| ■ Hitachi ZW220 wheel loaders | ■ Komatsu D155 bulldozers |
| ■ Bell B40D articulated dump trucks | ■ Komatsu D275 bulldozers |
| ■ Lighting plants | ■ Rock breakers |
| ■ Bitumen spray truck | ■ Line marking machines |
| ■ Hino dump trucks | ■ Hitachi 160 excavator |
| ■ John Deere 872G graders | ■ Hitachi 470 excavator |
| ■ Cat 16H graders | ■ Hitachi 1900 excavator |
| ■ CATCS53E steel drum rollers | ■ Hitachi 1200 excavator |
| ■ Sakai GW750-2 multi tyre rollers | ■ Caterpillar 777F haul trucks |



COMPETITIVE ADVANTAGE



Anitua Mining Services have completed diverse civil earthworks projects including engineered foundations, build pads and pipeline earthworks.

It's how we look at challenges that makes a difference

Strong relationships

What makes Anitua Mining Services' approach unique is the way in which we work with our customers. Building a strong relationship based on respect, shared knowledge and ongoing support. It is our personalised way of doing business, bringing together the best aspects of partnership, support, smart thinking and experience.

Training delivers high quality and certification

Anitua Mining Services' primary business is mining operations within a competitive and safety driven industry. The company prides itself on setting and maintaining extremely high safety standards in all aspects of mining and support operations. The workforce within Anitua Mining Services is encouraged to train and qualify on Australian and Papua New Guinean Registered Training Organisation (RTO) courses. Regularly scheduled training courses and programmed training opportunities are constantly updated to provide personnel with a variety of courses relevant to Anitua Mining Services outputs. The company has the ability to conduct a wide range of courses, driver training courses to certificate IV in frontline management or TAE.

How we face the challenges makes all the difference

Working in some of the world's toughest environments breeds a different way of thinking. Safety, training and innovative problem solving are critical to the success of our approach. We consider safety to be a way of life, not just a workplace activity. Our experienced operators and supervisors bring a wealth of knowledge and skills to each new project. A level of experience that is unmatched in Papua New Guinea.

Safety is number one

We do more than adhere to industry standards, we exceed them. This commitment to safety extends beyond just keeping our workers safe. It ensures that the company's operations do not place the local community at risk of injury or property damage. In a nutshell, safety is in everything we do.

Our safe work systems are environmentally sustainable and supported by documented procedures and audited systems.



BREADTH OF EXPERIENCE



Anitua Mining Services is able to source the appropriate fleet to meet your mining needs from small scale alluvial operations to major mine development projects.

International Experience / Project Experience

Anitua Mining Services currently operates exclusively within Papua New Guinea.

Established or Potential Global Partners

Part of the wider Anitua Group of Companies www.anitua.com.pg

Key Clients or Customers

Our major Papua New Guinea client is Newcrest Mining Ltd.

Project	Client	Where
Roads and infrastructure	Newcrest Mining Ltd	Lihir
Mining Support Services	Newcrest Mining Ltd	Lihir



WORKING WITH LOCAL COMMUNITIES



The Group employs 3,000 people with approximately 97% being PNG citizens.

Being recognised by a prestigious entity, such as the World Bank is something we can all be truly proud of.



Our deep understanding of both customary and modern-day laws in the PNG region assists in the facilitation of smooth business dealings between contractors and local landowners.

With operations scattered throughout PNG, Anitua's people have become immersed within a variety of local communities. Taking the time to understand the different customs and beliefs, our people are always sensitive to their issues.

Anitua has gained the respect and confidence of many landowner groups across PNG for our honesty and integrity in dealing with landowners.

As the World Bank commended 'premier example of a group of successful landowner owned businesses in Papua New Guinea', we are driven by a desire to provide prosperity to the communities in which we operate – by providing employment, training, social services and sponsorship.

We work with our clients to ensure their 'local hire' requirements are met. The overwhelming majority of our workforce are Papua New Guinea nationals, so we are experienced in industrial relations issues and working with local landowners, to ensure they get to participate in and benefit from major projects.

Excellence to customers and prosperity to our communities

As a 100% Lihirian owned company, Anitua Mining Services is well experienced in working with local/indigenous communities. We understand the importance of giving back to our communities, which is best summed up by the The Anitua Group of Companies Vision – 'A fully committed workforce delivering excellent services to our customers and prosperity to our communities'. Providing prosperity to the communities is embedded within our culture, so we know the importance of hiring and training local people in each area we operate in.

Sustainability through growth

We strive for sustainability, by growing our companies, in order to not only provide prosperity to the local communities within which we operate, but also in regards to ongoing dividend payments to our 2,500 Lihirian shareholders, to ensure sustainability for the Lihirian Community.



OTHER RELEVANT INFORMATION



Our training delivers high quality certification, producing a team of experienced operators and supervisors who bring a wealth of knowledge and skills to each new project.

A perfect partner

Anitua Mining Services' safety focus and cultural knowledge, combined with strengths of local experience, highly trained staff and strong management, makes Anitua Mining Services a perfect partner.

Financially stable

Furthermore, the Anitua Group are financially stable, with excellent management systems and corporate governance controls. The World Bank reported that the Anitua Group has the right commercial model for ongoing sustainability and success.

In terms of management, all of our companies are run to board level, with proper accounting, board meetings, dividends and sustainability provisions.

One-stop-shop approach

As part of the Anitua Group, we can offer a one-stop-shop approach, with the ability to provide multiple services – from mining and drilling services, camp construction, operations, and accommodation solutions, to catering, janitorial and security services, hardware supply, retail operations, vehicle supply and more.

The employer of choice

The Anitua Group employs 3,000 people throughout Papua New Guinea. Our commitment to provide excellent working conditions and training to each and every one of our employees means that we not only provide top quality services to our clients but that we are now the industry's employer of choice.



Employee training and development drive continuous improvement in safety and in the management of risk throughout our workplace, operations and processes.

The Safety and Health of all Anitua employees, contractors and visitors is a value which will not be compromised. We are totally committed to fulfilling all of our Safety and Health obligations.

*John Gethin-Jones
Chief Executive Officer
Anitua Group of
Companies*

SAFETY, HEALTH, ENVIRONMENT & COMMUNITY (SHEC)

Thinking, working and living safety. Every day.

Safety is in everything we do. You'll find it in the way we act, the way we talk and the way we think.

Employee training and development drives continuous improvement in safety and in the management of risk throughout our workplace, operations and processes.

Our focus on safety extends beyond our organisation to collaborative programs with contractors, clients and business partners.

It's more than removing hazards. It's a culture of safety. How we think, work and live – every minute of every day.

Vision

Develop, empower and inspire our employees to value their environment, health and safety through committed and passionate leadership and continuous improvement that results in an incident-free business environment.

Strategy

Safety and Health are two components of our Integrated Safety, Health, Environment and Community (SHEC) management system. Our Strategy is centred on three core elements:

- Our people
- Excellence in business
- Industry-leading safety



SAFETY, HEALTH, ENVIRONMENT & COMMUNITY (SHEC)



*It's more than
removing hazards.
It's a culture of safety*

**Manage risk
for greater
peace of mind**

Our SHEC Strategy is centred on three core elements

Our people

Driven by a dedicated leadership team, Anitua is committed to develop, empower and inspire our workforce with a focus on valuing safety, health, the environment and the community. The process for this includes:

- On Site Support
- Employee Selection
- SHEC Training
- Behavioural Based Observation
- Hazard Identification
- Hazard Management
- SHEC Intervention Training

Excellence in business

Aligned with our people, the integration of safety, health, environment and community systems across our business and operational processes drives continuous performance improvement. Always with a focus on safety. Key areas of focus include:

- SHEC Compliance
- Fitness For Work
- Injury Management
- Health Hazard Management
- Health Hazards Exposure Monitoring
- Integrated Operational Risk Management (IORM)
- Permit to Work Systems

Industry-leading safety

Our strong commitment and focus on safety is demonstrated through statutory and non-statutory compliance, supporting our safety, health, environment and community obligations. The success of our focus has grown our reputation as an industry-leader in safety and is supported by:

- Obligations Management and Assurance
- Document Control
- Strong Community Involvement



SAFETY, HEALTH, ENVIRONMENT & COMMUNITY (SHEC)



Employee training and development drives continuous improvement in safety and in the management of risk throughout our workplace, operations and processes.

**Innovation, safety
and training form the
basis of our success**

Safety, it's in the way we work

The Anitua Group cut its teeth servicing clients in the mining industry which is governed by some of the strictest workplace safety legislation in the world. Understandably, our safety procedures and systems have therefore developed in to some of the most rigorous in PNG.

Staff across each of our businesses are well trained in both their actual job as well as industry specific safety requirements. Additionally, we are supported by our Safety Health Environment and Community (SHEC) team.

There is no doubt that The Anitua Group is the service provider of choice when it comes to safety. Our absolute focus on safety and training is part of our commitment to the delivery of world-class solutions.

The Anitua Group safety systems and procedures are in accord with PNG and Australian mine safety legislation. We also have an expert SHEC team that operates with a single aim of maintaining safety as our number one priority. Our systems align to ISO 18001, 14001 and 9001 principles.

Our SHEC team conducts its own Safety Leadership Program and Safety Awards Program.



ABOUT THE ANITUA GROUP



The combined strengths of local experience, cultural knowledge, highly trained staff and strong management, makes Anitua a perfect partner for your organisation.

The Anitua group offers a breadth of services with the ability to provide complete end-to-end solutions

A 100% PNG landowner owned company established in 1989, the purpose of establishing the Anitua Group was to provide a means for landowners to participate in the Lihir Gold project, one of the world's largest gold mines. Today the Anitua Group is one of the largest single suppliers of goods and services to a broad range of industries across Papua New Guinea.

Anitua works with its range of business partners and clients every day to not only break new ground in a literal sense, but to constantly push the envelope – looking for better ways of servicing our clients' needs.

The Anitua Group can offer packages of services to those looking at major projects – construction, camp management, security, mining services and more. We also ensure our smaller clients are well looked after in the field of their needs – be it retail, security or civil works.

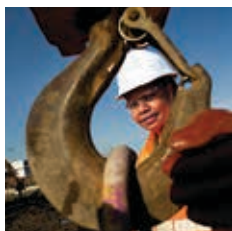
Socially responsible and progressive, the Anitua Group is a diverse range of specialised companies complementing and supporting each other to provide value to organisations across many industries.

The Group's impressive portfolio of businesses includes:

- Anitua Corporate Services
- Anitua Mining Services
- Anitua Radial Drilling Services
 - Central Drillers
- Anitua Constructions
 - GDA Fabrications
 - PNG Technical Solutions
- Anitua Protective Services
- Anitua Insurance Brokers
- Anitua Supermarket
- Anitua Hardware
- Anitua Investments
- Anitua Properties
- Anitua Farms
- Lihir Auto Services
- Lihir Investments (Australia)
- NCS Holdings
 - The Alliance Group (TAG)



ABOUT THE ANITUA GROUP



The ability to provide complete end-to-end solutions enables our customers to outsource many of their business and operational requirements, allowing them to minimise their capital investment and streamline their operations.

The Anitua Group offers a breadth of services with the ability to provide complete end-to-end solutions.

The group's services include:

- Mine site support
- Mining & equipment
- Contract mining
- Quarrying services
- Road & civil construction
- Drilling
- Camp operation & management
- Construction & maintenance
- Catering & hospitality
- Hotels
- Farming
- Fresh produce
- Supermarket
- Hardware
- Security services
- Property management
- Automotive
- Transport
- Logistics
- Business development
- Small business services
- Insurance
- Glass & aluminium fabrication
- Engineering testing & certification



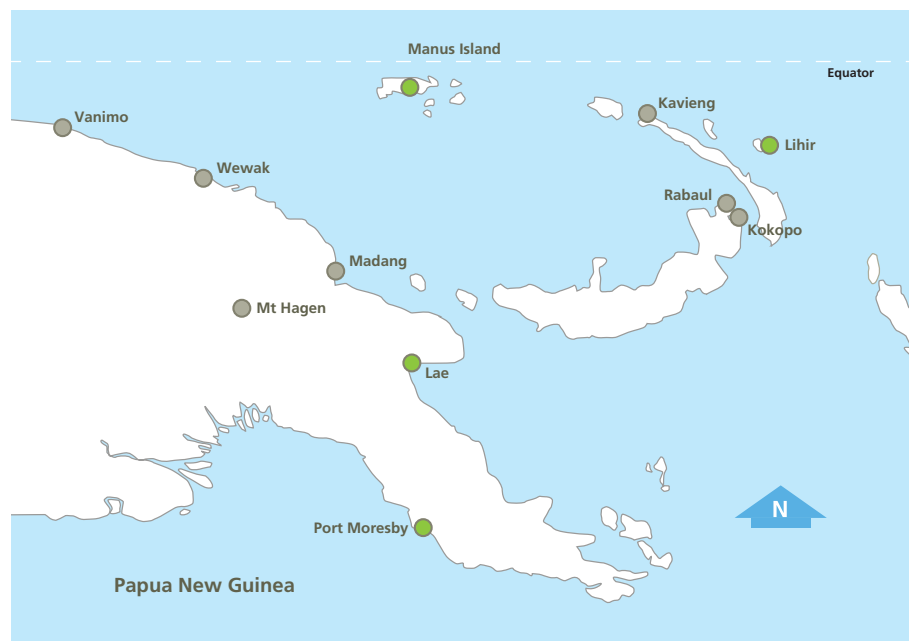
LOCATION



You can rely on our team of project managers to successfully see your project through to completion

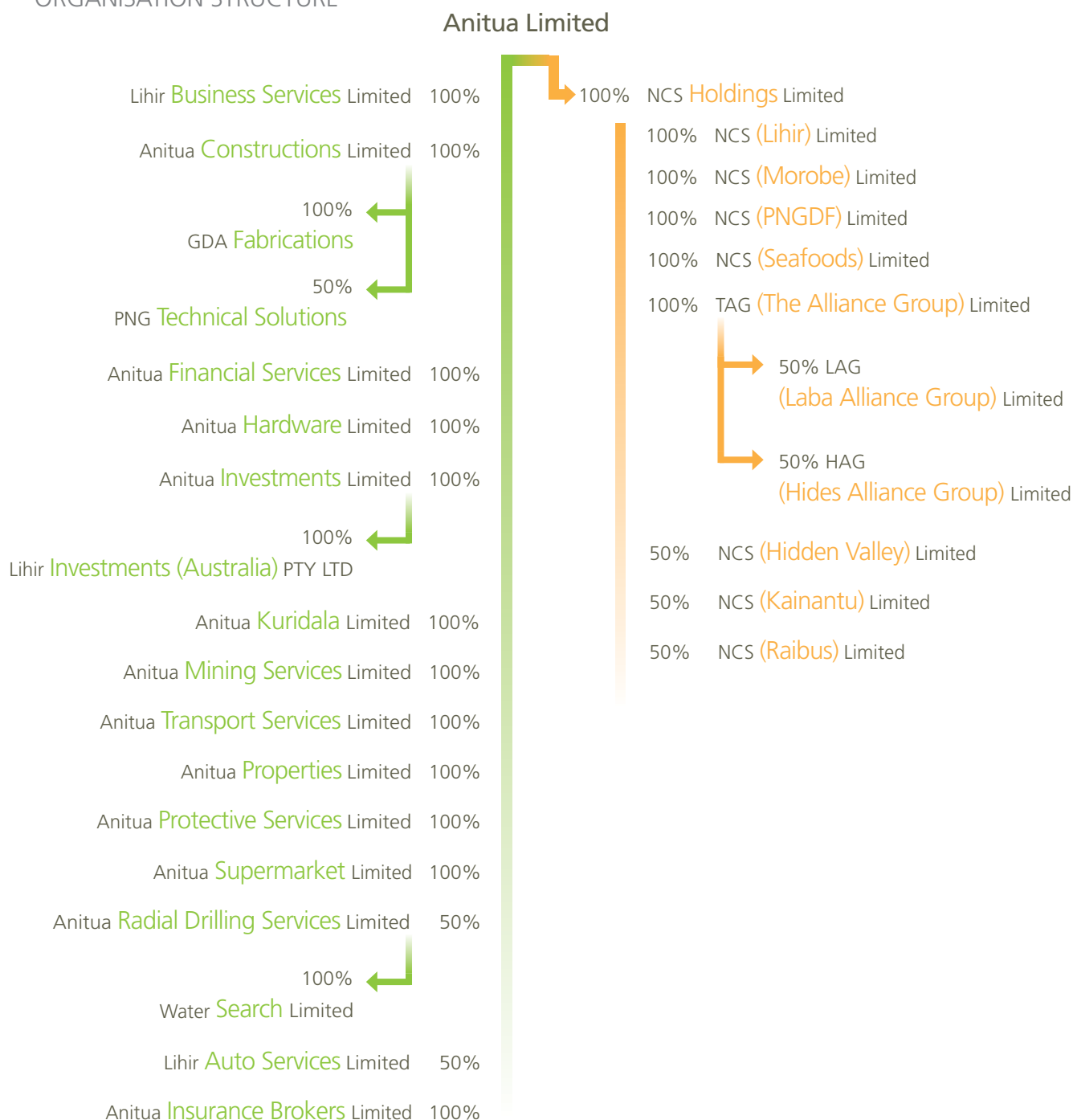
The Anitua Group of Companies has its headquarters on Niolam Island, in the New Ireland province of Papua New Guinea. As Niolam is the principal island of the Lihir Group, it is generally referred to as Lihir Island. Lihir Island is located at longitude 152°38' E, latitude 3°07', and approximately 700km north-east of Port Moresby, the capital of Papua New Guinea.

The Group also has major offices in Lae and Port Moresby. Our subsidiary companies operate in 30+ different locations throughout Papua New Guinea.





ORGANISATION STRUCTURE





WORLD BANK COMMENDATION AS A STANDOUT LANDOWNER COMPANY



On EMTV's 'Business PNG' program, the Anitua Group was commended by World Bank Country Manager, Laura Baily, as a stand out example of a successful, special and unique landowner company, and one of the best in PNG.



Special mention was also made of camp management and catering company NCS, a subsidiary of the Anitua Group. Surveys carried out by the World Bank highlighted that the Anitua Group of Companies has the right commercial model, which is deemed critical to ongoing sustainability and success. Laura went on to explain that for landowner companies to be successful, they cannot behave as a social entity – but must have a clear and focused commercial model.



The Group's clear and explicit understanding of its business goals (operating alongside its clear social goals) and its ability to attract senior talent who have a genuine commitment to development and a focus on building the skills of PNG workers have been key factors in the Group's success.



The Group was recognised for being able to grow and expand beyond the initial resource project that enabled the Group to exist – to expand and diversify the businesses within the Group and to expand geographically throughout PNG.

This successful expansion and diversity of the Group's portfolio of businesses has contributed to providing sustainable jobs, training a large number of people and helped improve the quality of life of those in the communities in which we operate.

Being recognised by a prestigious entity, such as the World Bank is something we can all be truly proud of.

*Laura Baily, Country Manager
PNG – World Bank on EMTV's
'Business PNG' program*



WORLD BANK COMMENDATION FOR CORPORATE SOCIAL RESPONSIBILITY PROGRAMS

Anitua understands that being a successful company is more than just a healthy balance sheet. It's also about giving back to the community and recognising that healthy, prosperous communities are good business.

Spearheading Anitua's Corporate Social Responsibility program and in accord with our vision for healthy, prosperous and sustainable communities in which we operate, is our *Elimination of Violence Against Women* program. A comprehensive and group-wide approach to eliminating violence against women.

Another key element of our Corporate Social Responsibility is our *Elimination of Malaria* Program.



Our recruitment, training, development and empowerment of women is realised through diverse programs addressing education, mentoring, professional development, flexible work options, and health.

Elimination of violence against women

At Anitua we aim to eliminate violence against women through:

- Keeping the problem of violence against women in the public eye through a variety of media, activities and events
- Implementing a Family & Sexual Violence workplace policy
- Supporting White Ribbon activities throughout our workplaces and the communities in which we operate
- Developing and implementing policies and procedures in accord with the White Ribbon Workplace Program
- Helping develop resources for the PNG business community to address Family & Sexual Violence through our involvement with the World Bank-IFC sponsored Business Coalition for Women
- Assisting other businesses to introduce their own Elimination of Violence Against Women initiatives
- Championing and supporting the establishment of a Meri Seif Haus (women's refuge)



WORLD BANK COMMENDATION FOR CORPORATE SOCIAL RESPONSIBILITY PROGRAMS



The Anitua Group is supporting a plan to eliminate Malaria from the Lihir Islands.

Elimination of Malaria

Malaria negatively impacts the health and well being of thousands of Papua New Guineans on a daily basis. Malaria is the leading cause of death on Lihir Island.

The Anitua Group is supporting a plan to eliminate Malaria from the Lihir Islands through:

- intensive vector control that will effectively reduce mosquito-person contact
- a series of mass treatment campaigns to rapidly reduce the malaria parasite burden
- a system of community surveillance-response to tackle residual foci.



ANITUA MINING SERVICES KEY CONTACT

Keiron Thomas

General Manager

Tel: (+675) 986 4155 / 4154

Mobile: (+675) 7565 0120

keiron.thomas@anitua.com.pg

ANITUA CORPORATE CONTACT

John Gethin-Jones

Chief Executive Officer

Tel: (+675) 986 4633 ext 201

john.gethin-jones@anitua.com.pg